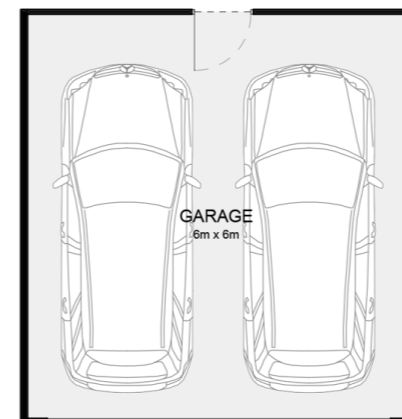
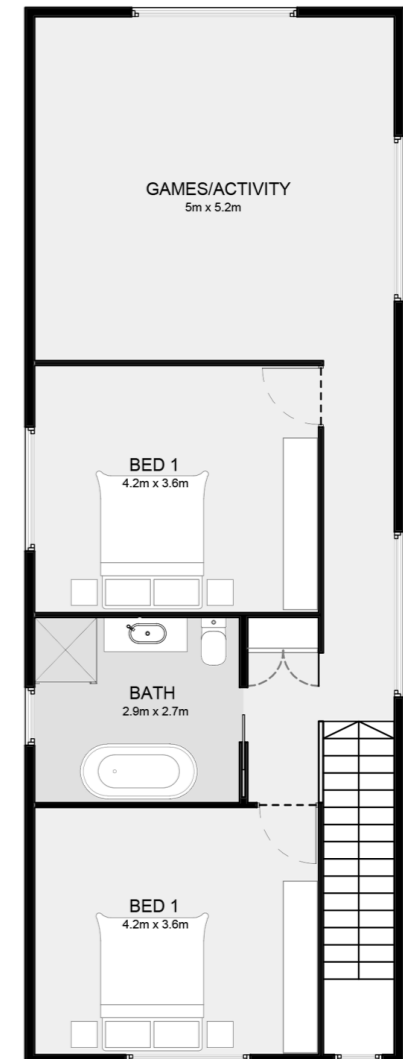
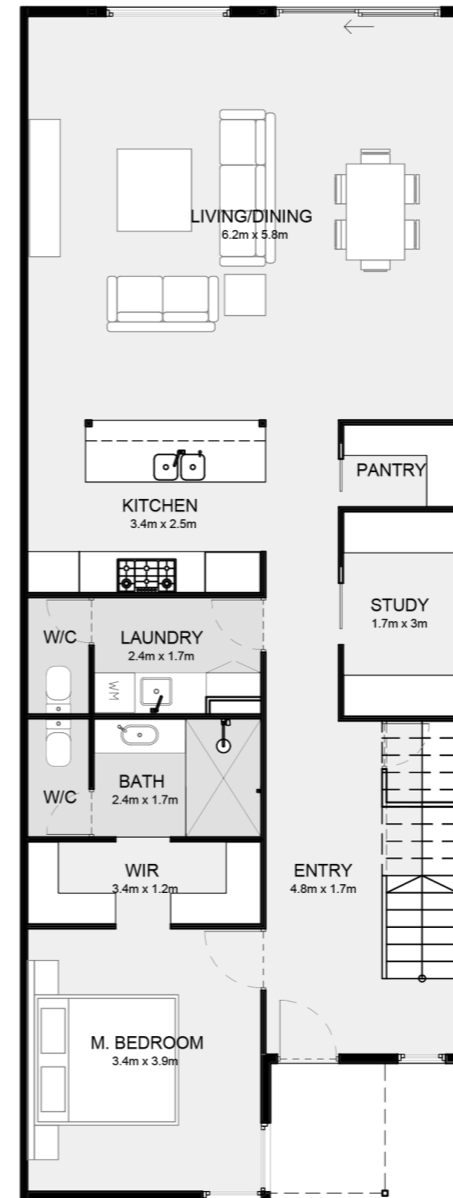


# The Grasby

A custom double storey design on a small, narrow block that uses the FastFix Residential System to its full potential by achieving a high quality interior comfort with a unique modern design, and plenty of space for a growing family.

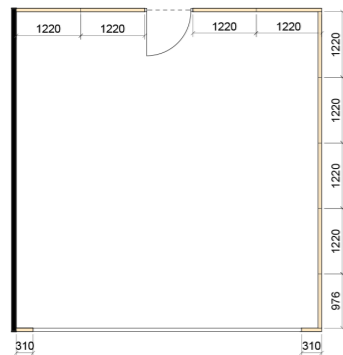
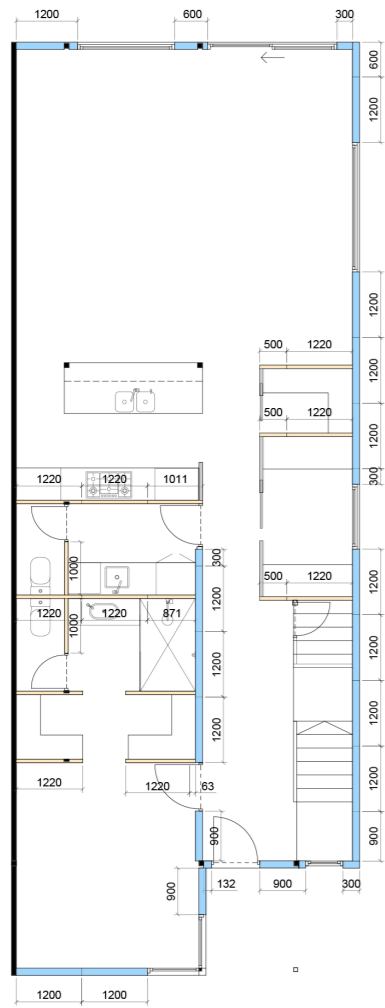


3 Bed 2 Bath 2 Garage | 7.5 m Frontage

### Specifications

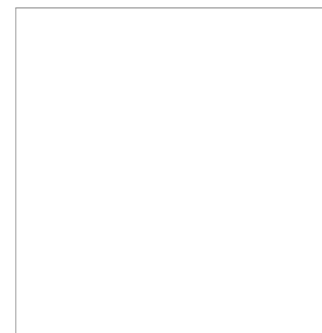
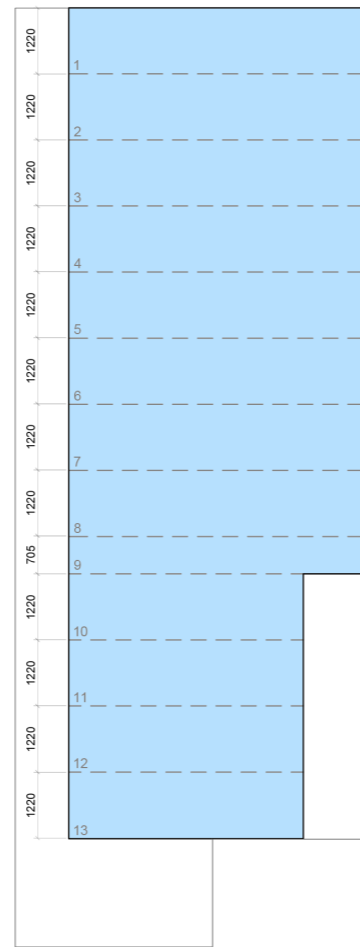
Residence	170 m <sup>2</sup>
Garage	31.5 m <sup>2</sup>
Alfresco	17.75 m <sup>2</sup>
<b>Total</b>	<b>219.25 m<sup>2</sup></b>
Width	11 m
Length	23.4 m

### Step 1: Ground Floor Wall Panels

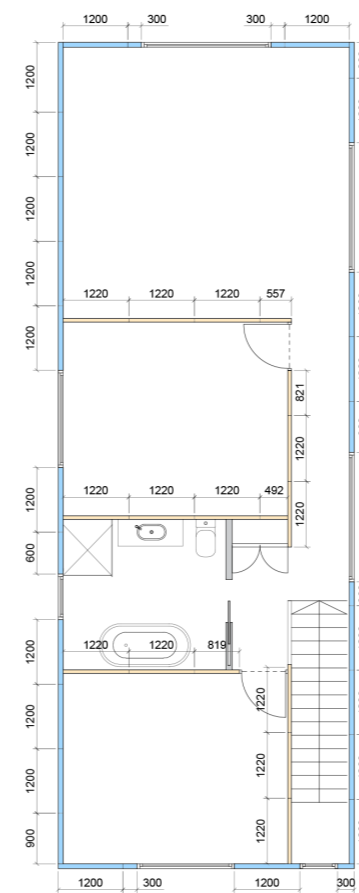


External 90mm Wall Panel  
Internal 65mm Wall Panel

### Step 2: 2nd Storey Floor Panels



### Step 3: 2nd Storey Wall Panels



External 90mm Wall Panel  
Internal 65mm Wall Panel

### Step 4: Roof



## How its Built

The process begins by creating installation shop drawings for the walls, floors and roof of the house, which are then ordered and delivered to site. The panels are then fixed into place according to the shop drawings, as per the technical specification.

