

# Teatro



## Specifications

4 Bed 2 Bath 2 Garage  
12.5m Frontage

Residence  
Garage  
Alfresco  
Total

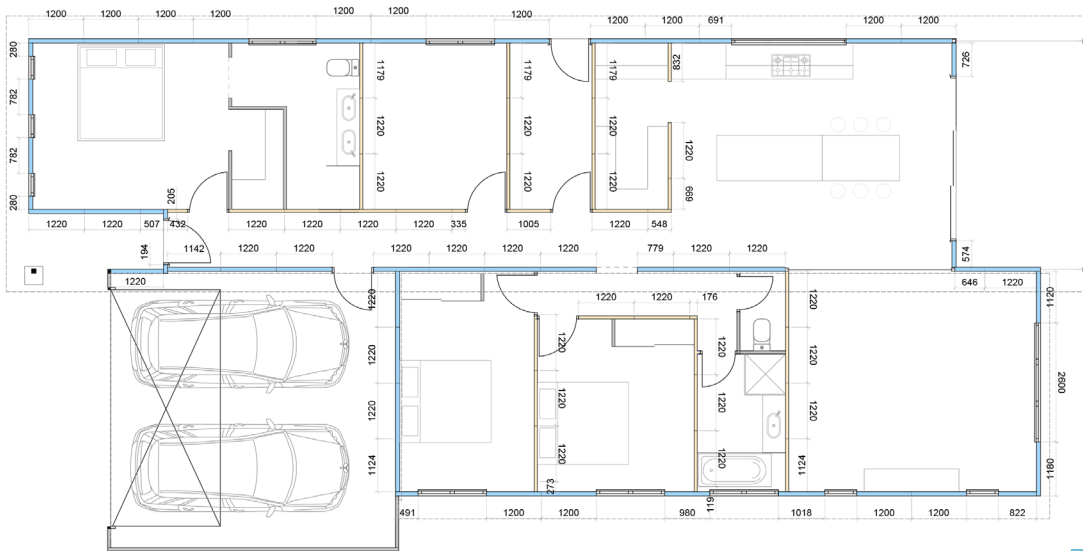
168 m<sup>2</sup>  
38 m<sup>2</sup>  
17 m<sup>2</sup>  
223 m<sup>2</sup>

Width 11.2 m  
Length 23.2 m

# How its Built

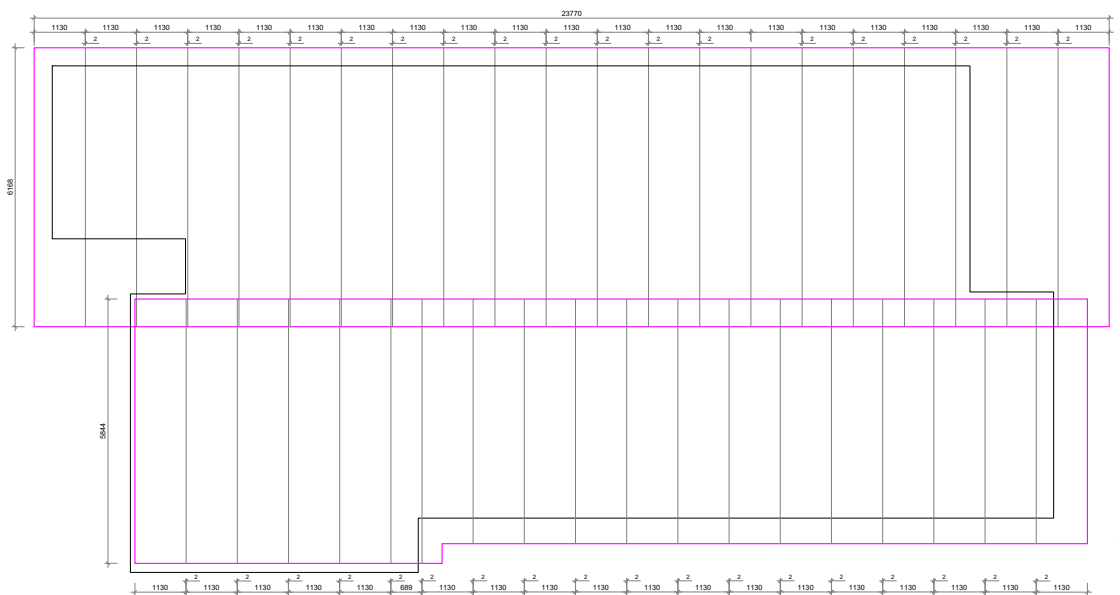
The process begins by creating installation shop drawings for the walls, floors and roof of the house, which are then ordered and delivered to site. The panels are then fixed into place according to the shop drawings, as per the technical specification.

## Step 1: Ground Floor Wall Panels



- External 90mm Wall Panel
- Internal 65mm Wall Panel

## Step 2: Roof Panels



- FF-3000 Roof Panel