

# St Tropez Gardens

This clever 4x2 design on a common 12 x 30m block, is one of Shemco's alternative takes on standard cookie cutter project builds. It is affordable, energy efficient and aesthetically modern. Clad with James Hardie Texture Cladding, and weatherboard which covers most of the house. The standout features include high raked internal ceilings, cantilevering roof over the Porch.



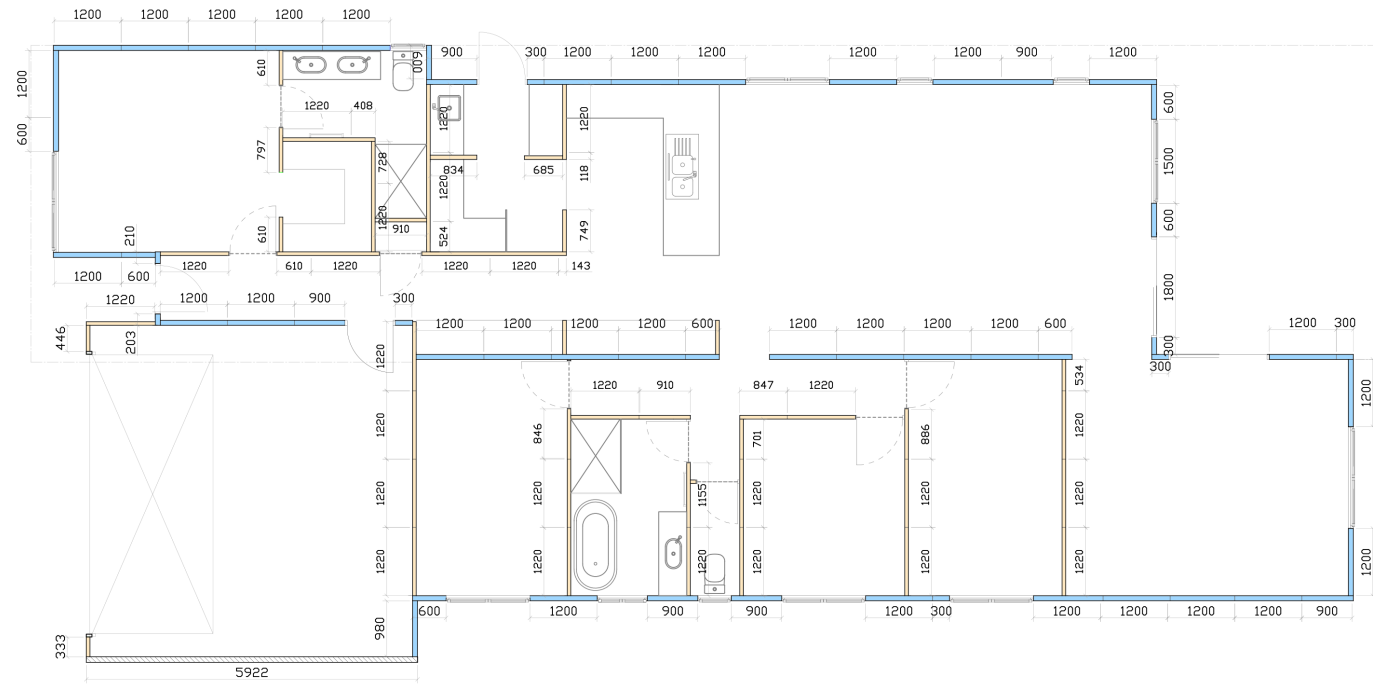
4 Bed 2 Bath 2 Garage | 12 m Frontage

### Specifications

Residence	170 m <sup>2</sup>
Garage	36 m <sup>2</sup>
Alfresco	17 m <sup>2</sup>
<b>Total</b>	<b>223 m<sup>2</sup></b>
Width	11 m
Length	23.4 m

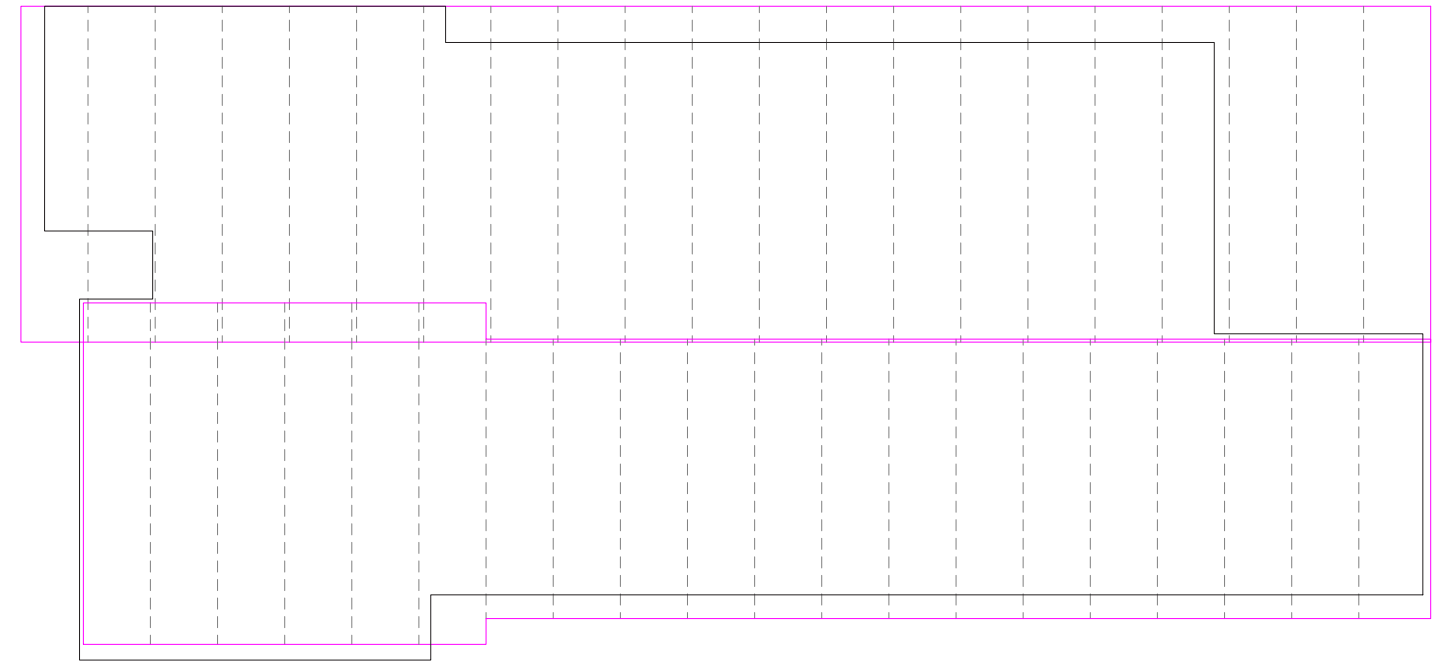


### Step 1: Ground Floor Wall Panels



- External 90mm Wall Panel
- Internal 65mm Wall Panel
- Roof Panel

### Step 2: Roof Panels



### How its Built

The process begins by creating installation shop drawings for the walls, floors and roof of the house, which are then ordered and delivered to site. The panels are then fixed into place according to the shop drawings, as per the technical specification.

